



Inkscape

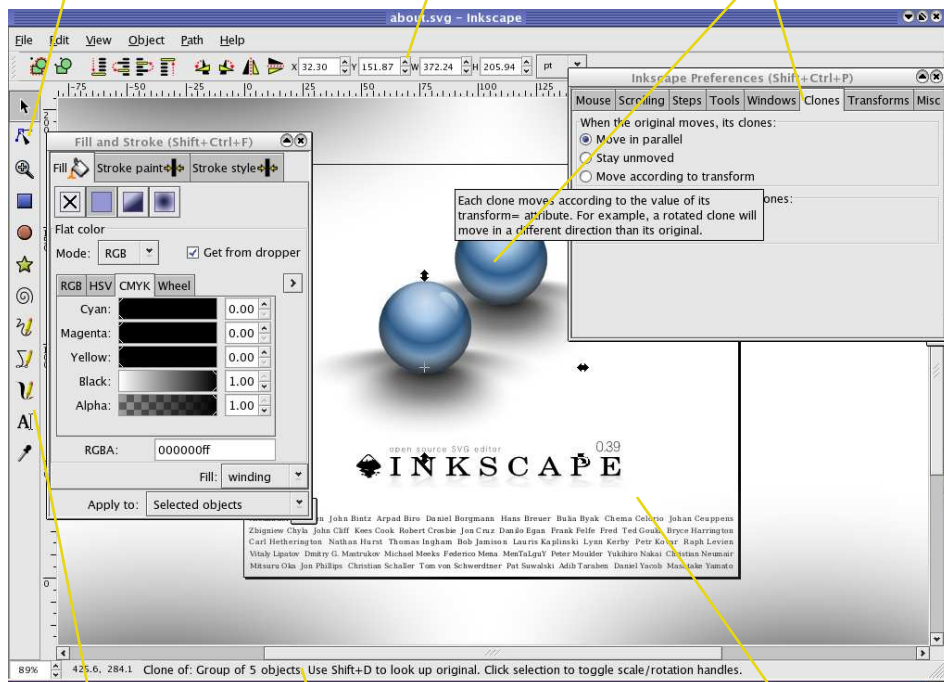
www.inkscape.org

Powerful node editing tools

Control for precise placement

Clones allow for two objects to be identical. Changes occur on both.

Open Clipart metadata support



Each clone moves according to the value of its transform= attribute. For example, a rotated clone will move in a different direction than its original.

Inkscape is an **open source** application used for vector illustration. It uses the increasingly popular **SVG standard** from the W3C (the HTML people). SVG is becoming a critical graphics standard for Internet users and developers alike. SVG is targeted for smaller devices like **cell phones and PDAs** through the SVG Basic profile. Open source desktops are also looking at **SVG for icons** and other graphics.

Inkscape is built upon an **intuitive user interface** for both experienced artists and beginners alike. It also contains **interactive tutorials** on how to use the application including a section on elements of style to help you make your drawings better.

This presentation will focus on the features of Inkscape available today, how to use it, and what features are planned for the future. Examples of how to use Inkscape and a short demo will also be included. (Note: This flier was done in Inkscape)

Common tools at your fingertips

Status bar with useful messages

Cross-platform tool (Windows, Mac, Linux)

Dynamic anti-aliased canvas

When: Tues, September 21 at 4pm

Where: ASU Main Campus
Computing Commons
Auditorium (CPCOM 120)

