



Inkscape

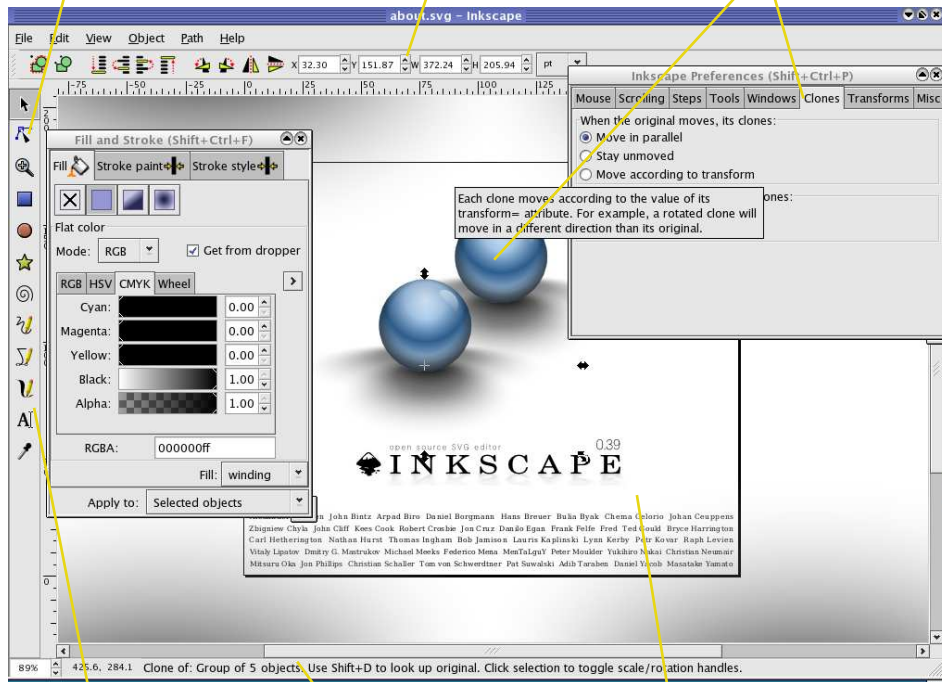
www.inkscape.org

Powerful node editing tools

Open Clipart metadata support

Control for precise placement

Clones allow for two objects to be identical. Changes occur on both.



Each clone moves according to the value of its transform= attribute. For example, a rotated clone will move in a different direction than its original.

Inkscape is an **open source** application used for vector illustration. It uses the increasingly popular **SVG standard** from the W3C (the HTML people). With their support it is becoming a critical graphics standard for Internet users and developers alike. SVG is targeted for smaller devices like **cell phones and PDAs** through the SVG Basic profile. Open source desktops are also looking at **SVG for icons** and other graphics.

Inkscape has an **intuitive interface** for both experienced artists and beginners alike. It also contains **interactive tutorials** on how to use the application, and also elements of style to make your drawings better.

This presentation will focus on the features of Inkscape today, how to use it, and what features are planned for the future. Examples of using Inkscape and a short demo will also be included. (Note: This flier was done in Inkscape)

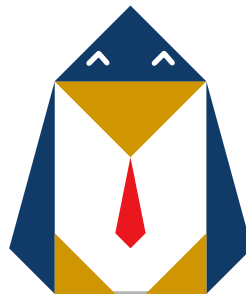
Common tools at your fingertips

Status bar with useful messages

Dynamic anti-aliased canvas

When: Wed. August 25th 7pm

Where: DeVry University
East of I-17
22nd Ave. and Dunlap
Room 106



DeLUG

DeVry Linux Users Group